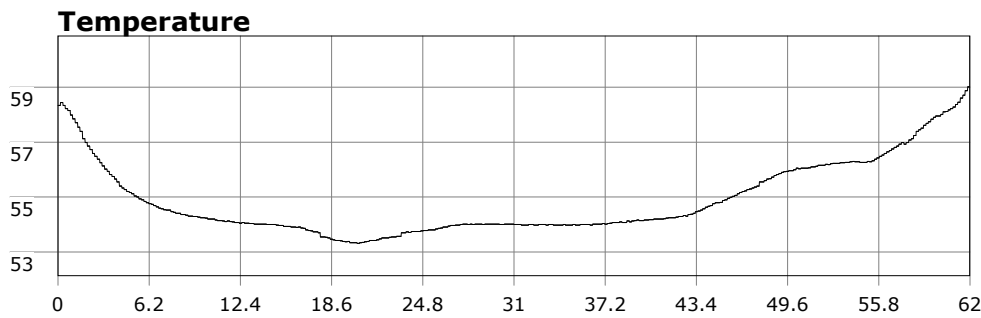
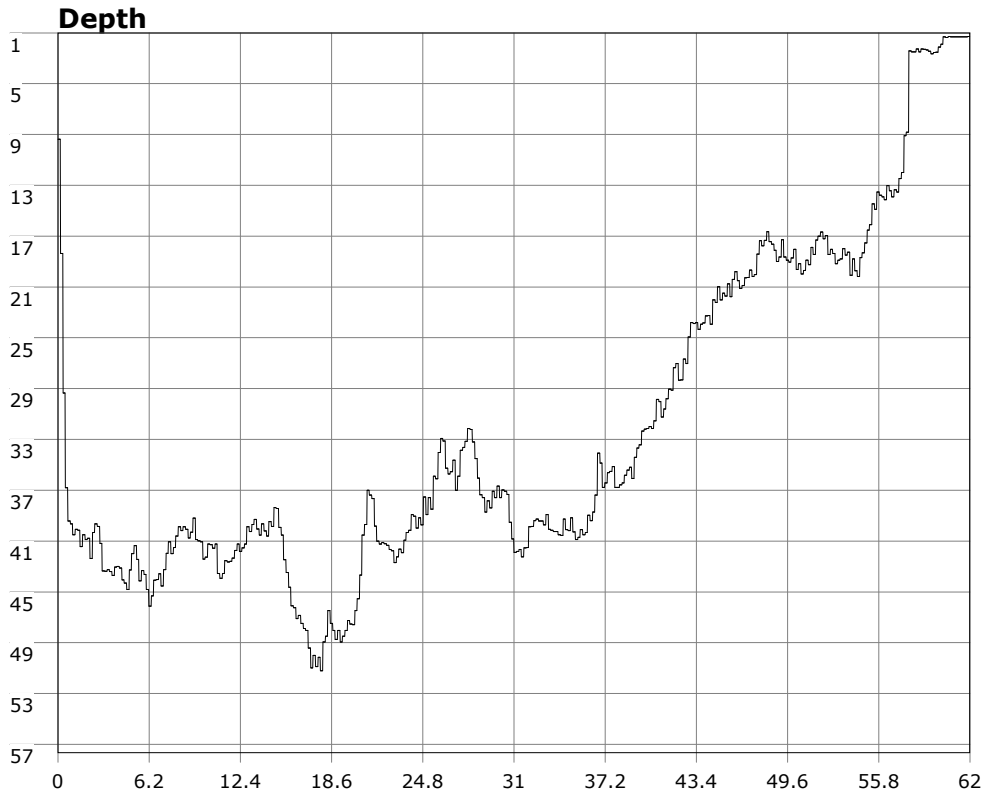


SU-05603 : 8/27/2011 9:10 AM



Interval
10 second(s)

Time
01:02:00 B.T.
01:02:00 B.T.
>24 hrs S.I.

Depth
Avg 32.04 ft 32.04 ft
Max 51.21 ft 51.21 ft

Temperature
Avg 54.91 °F 54.91 °F
Min 53.31 °F 53.31 °F

Ascent Rate
38.43 ft/min (max.)
38.43 ft/min (max.)

Tank Pressure
3100 PSI (in)
1250 PSI (out)

SAC Rate
15.1 PSI/min

Altitude
0 ft

Water Type
Salt Water

Site: OML

Buddy: Nice Bob, Joe, Jordan, Roger

Comments

Equipment build: 7mm suit + vest w/hood; one light; 19 lbs weight, camera

Quite the large crowd for a saturday. The point was iffy so we got in at the cove and made a long surface swim towards the point. We dropped down in 40ft and headed west. Vis a good 15ft and there was no current to deal with. Saw the usual critters and a san diego dori. Entry/exit were uneventful.

Additional Notes
