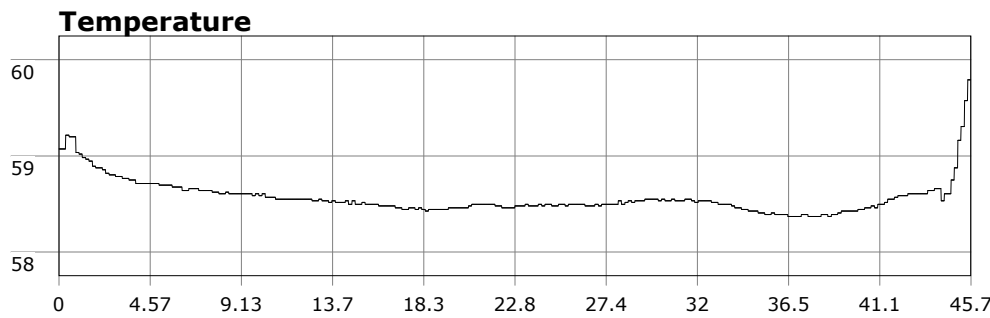


SU-05603 : 10/2/2011 9:24 AM



Interval	10 second(s)
Time	00:45:40 B.T. 00:45:40 B.T. 23:03:43 S.I.
Depth	Avg 24.15 ft 24.15 ft Max 40.85 ft 40.85 ft
Temperature	Avg 58.57 °F 58.57 °F Min 58.37 °F 58.37 °F
Ascent Rate	27.76 ft/min (max.) 27.76 ft/min (max.)
Tank Pressure	3250 PSI (in) 2000 PSI (out)
SAC Rate	15.8 PSI/min
Altitude	0 ft
Water Type	Salt Water

Site: OML

Buddy: Broken Chris

Comments

Equipment build: new 7mm suit + 7 mm vest w/hood; one light; 18 lbs weight, camera

Large group at OML today. Some hit the point; some went to 120, some went to the platform. Myself and a new diver got in at the cove and headed west to the point. Vis 8ft most of the way but did open up near the garden so we got to feed Abby.

Additional Notes
