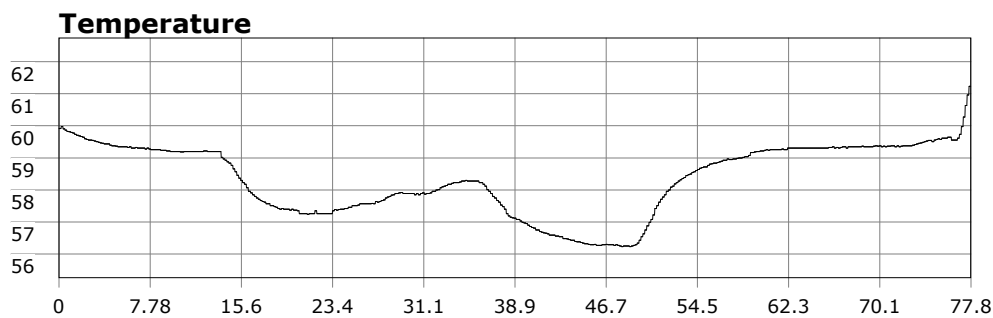


SU-05603 : 10/30/2011 8:50 AM



Interval	10 second(s)
Time	01:17:50 B.T. 01:17:50 B.T. 22:26:00 S.I.
Depth	Avg 27.10 ft 27.10 ft Max 37.65 ft 37.65 ft
Temperature	Avg 58.35 °F 58.35 °F Min 56.23 °F 56.23 °F
Ascent Rate	26.98 ft/min (max.) 26.98 ft/min (max.)
Tank Pressure	3150 PSI (in) 1000 PSI (out)
SAC Rate	15.2 PSI/min
Altitude	0 ft
Water Type	Salt Water

Site: OML

Buddy:

Comments

Equipment build: new 7mm suit + 7 mm vest w/hood; one light; 18 lbs weight, camera

Good if murky dive today. Despite flat water, vis was a bit limited at 6ft. Dark and creepy. Got in at the cove and headed to the point. Made the huge pinnacle a little faster this time and got to hang out a bit. This one rock is worth the swim. One the way back, came across a large but sleeping bat ray. Hung out with him for a bit and kicked home. In the garden, fed Abby and hung out with a school of mackerel, the senioritas, and blacksmiths.

Additional Notes
