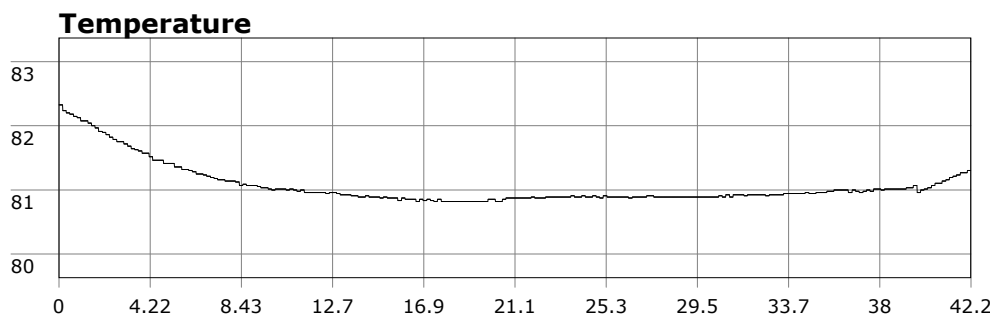


SU-05603 : 7/3/2009 8:07 AM



Interval	10 second(s)
Time	00:42:10 B.T. 00:42:10 B.T. 00:43:00 S.I.
Depth	Avg 31.69 ft 31.69 ft Max 51.63 ft 51.63 ft
Temperature	Avg 81.06 °F 81.06 °F Min 80.82 °F 80.82 °F
Ascent Rate	19.99 ft/min (max.) 19.99 ft/min (max.)
Tank Pressure	3000 PSI (in) 1750 PSI (out)
SAC Rate	15.3 PSI/min
Altitude	0 ft
Water Type	Salt Water

Site: The channel, Sosusa, Dominican Republic

Buddy: Eddie the guide.

Comments

3 Jul 09

Equipment config: 3mm shortie, 9lbs weight, camera no strobe, spare air.

Very lazy dive a few minute boat ride from the launch site. As with the other dive sites here, there was coral of all types and plenty of colorful fish. Also saw some colorful but small shrimp-like creatures. Slow, easy diving at it's best.

Additional Notes
