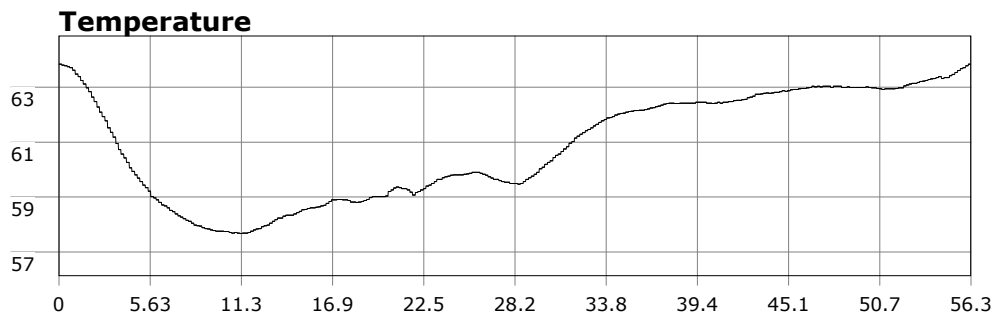


# SU-05603 : 8/14/2011 9:15 AM



<b>Interval</b>	10 second(s)
<b>Time</b>	00:56:20 B.T. 00:56:20 B.T. >24 hrs S.I.
<b>Depth</b>	Avg 28.91 ft 28.91 ft Max 51.76 ft 51.76 ft
<b>Temperature</b>	Avg 60.86 °F 60.86 °F Min 57.67 °F 57.67 °F
<b>Ascent Rate</b>	20.38 ft/min (max.) 20.38 ft/min (max.)
<b>Tank Pressure</b>	3250 PSI (in) 1800 PSI (out)
<b>SAC Rate</b>	13.9 PSI/min
<b>Altitude</b>	0 ft
<b>Water Type</b>	Salt Water

**Site:** long point

**Buddy:** Nice Bob, Dry Suit, Rev, PSD

## Comments

Equipment build: 7mm suit + vest w/hood; one light; 19 lbs weight, camera

Very flat conditions today made entry at the point fairly easy. We surface kicked a long way out then dropped down. Vis in the 15ft range. While there didn't appear to be a current, we arrived at the cove fairly quickly so one must have been present. Aside from the usual critters, saw a very small blue nudibranch with yellow 'racing stripes'. After waiting it for a bit I looked up to see I'd lost everyone else. I eased on in staying 30-40ft most of the way. Lots of small kelp fish and big schools of blacksmith along with an ab were the highlights today.

## Additional Notes

---

---

---

---

---

---

---

---

---

---