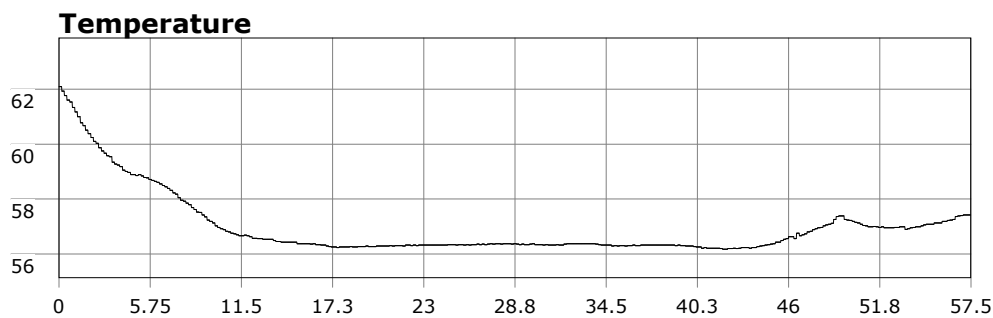
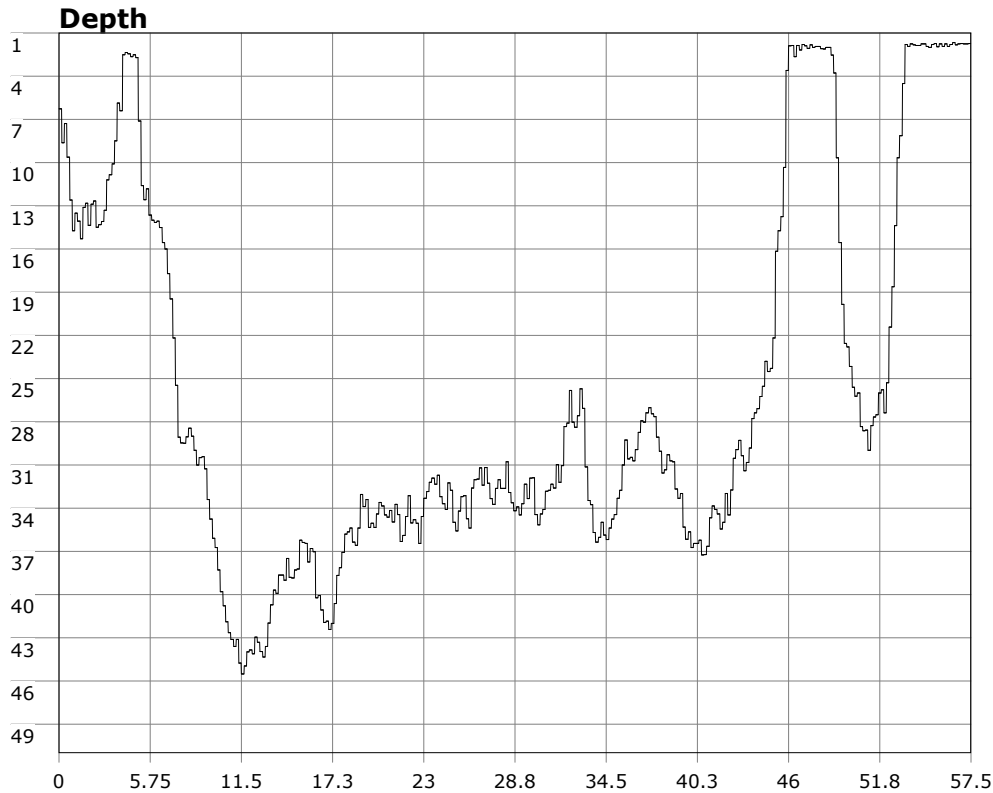


SU-05603 : 7/31/2011 9:17 AM



Interval	10 second(s)
Time	00:57:30 B.T. 00:57:30 B.T. >24 hrs S.I.
Depth	Avg 25.97 ft 25.97 ft Max 45.51 ft 45.51 ft
Temperature	Avg 56.97 °F 56.97 °F Min 56.17 °F 56.17 °F
Ascent Rate	40.37 ft/min (max.) 40.37 ft/min (max.)
Tank Pressure	3000 PSI (in) 1400 PSI (out)
SAC Rate	15.8 PSI/min
Altitude	0 ft
Water Type	Salt Water

Site: long point

Buddy: chipper, Nice Bob, Joe

Comments

Equipment build: 7mm suit + vest w/hood; one light; 19 lbs weight, camera

Though conditions were a little more rough than last week, the point was still doable. Chipper picked out a good spot west of the post that worked well. Some timing was required but overall not too dicey. Vis from the surface didn't look that good but it really opened up at depth to 15-20ft.

Me and Chipper teamed up and dropped down. Surge was moderate even down at 35ft. We didn't bother looking for Ted's pinnacle but rather stayed in the 30-40 ft range and made our way in.

We saw numerous pinnacles, several of which I've never seen before. With the good vis we explored every one until we had to kick in due to air constraints. One of the best dives at the point in while.

Additional Notes
